

TIMES LENGTHS OF NOTES AND RESTS



Whole note

(a whole note = 1 times its own length)



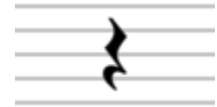
Half note

(half as long as a whole note = $\frac{1}{2}$ length of whole note)



Quarter note

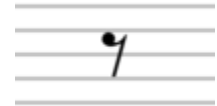
(half as long as a half note = $\frac{1}{4}$ length of whole note)



Eighth note

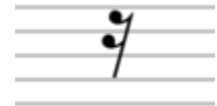
(half as long as a quarter note = $\frac{1}{8}$ length of whole note)

For notes of this length and shorter, the note has the same number of flags (or hooks) as the rest has branches.

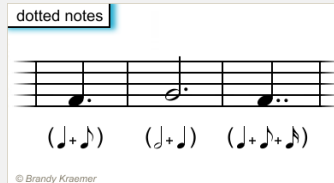


Sixteenth note

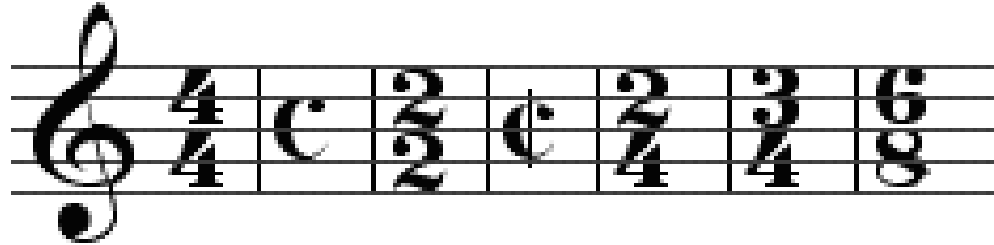
(half as long as an eighth note = $\frac{1}{16}$ length of whole note)















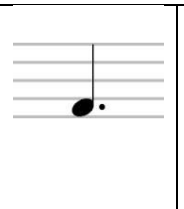


NOTE: A dot after a note always adds one half of the note's original time value to the note.

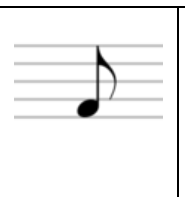
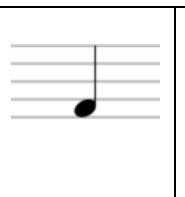


TIME SIGNATURES

	<p>= number of beats per measure</p> <p>= which kind of note gets 1 beat</p>
--	--

							
---	---	---	---	--	---	---	---

							
--	--	--	--	---	--	--	--

							
---	---	---	---	--	---	---	---